

First Response Letter

Date: 05/23/2024

Project Name: WANG & YANG ADU

Permit Number: 2402-186

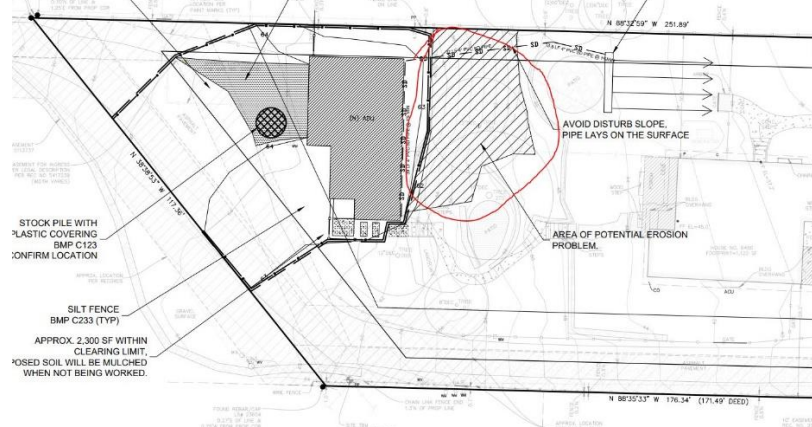
Address: 6450 E Mercer Way, Mercer Island, WA 98040

Comments:

1. Based on the Geotechnical Report, LID BMPs including dispersion trench is not feasible for this site

Response:

During the design phase, geotechnical engineer identified potential erosion area, delineated by hatching on the plan, please see attached,



The dispersion trench was placed downslope from the marked erosion-prone area. The design is intended to route storm pipes directly over the potential erosion zone without excavation or alteration. This strategy is noted by a leader on the plan.

In Section 9.2 of the Geotechnical Report, Erosion Hazard Mitigation on page 28, “it is noted that drainage pipes should be tightlined to a natural drain course or dispersed in an appropriate area below and away from slope faces.” | In terms of civil design, the dispersion trench placement was in a 13% slope area where a minimum 25 feet of flow path is provided. The CAD measured actual flow path to the east property line at 81 feet, which is exceed than required distance. Meeting the design criteria outlined in the 2019 DOE stormwater manual.

According to initial submission, City of Mercer Island Small Project Stormwater Site Plan/Report, Section C, infeasibility criteria. Page 22-26, each infeasibility criteria has been provided with an explanation. The infeasibility analysis stops at page 26 downspout dispersion system.

We have demonstrated the feasibility of the dispersion system in accordance with the 2019 DOE stormwater Manual.